



Safari Zenith II

A beautiful view from inside and out.

Sliding the Zenith II's large sliding glass doors open will immediately give you a different perspective on glamping. At once you are immersed in the essence of your environment. But you may never want to leave the spacious luxury of the 22.9m² (246.5ft²) interior space. The Safari Zenith II offers a variety of customizable options such as heating, air conditioning, solar power, and even ensuite bathrooms that can bring great possibilities to your glamping experience.

Leaders in frame strength and durability



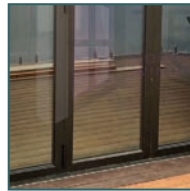
Strong aluminum and steel frame



Dual layers create insulating air-gap

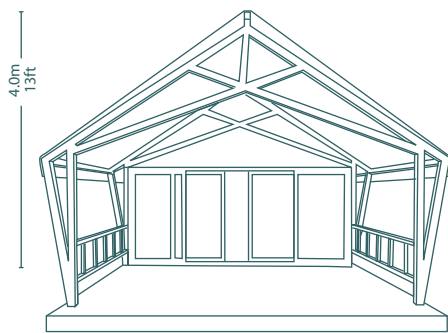


Fully adjustable anti-slip buckles



Sliding glass doors

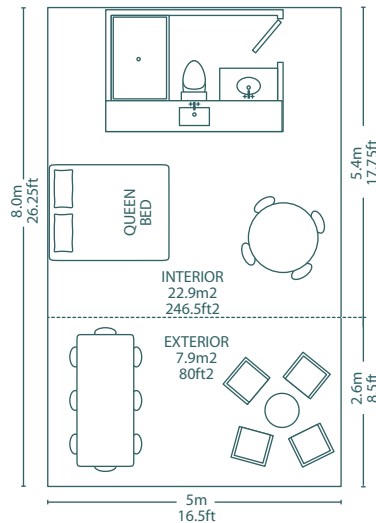
DIMENSIONS



4.0m
13ft

5m
16.5ft

4.8m (15.7ft)



SPECIFICATIONS

Outer Dimension: 5m x 8m x 4m
LxWxH (16.4ft x 26.2ft x 13.1ft)

Outer Area: 40m² (430 ft²)

Inner Dimension: 5m x 5.2m x 3m
LxWxH (15.7ft x 17ft x 9.8ft)

Inner Area: 22.9m² (246.5ft²)

Max Wind Load: 75km/h (46mph)

Product Weight: 764kg (1684lbs)

MATERIALS

Roof Fabric 750 g/m² double-coated opaque PVC (dark green), waterproof, UV resistant, flame retardant

Sidewall Polyester-Cotton cloth with vents and sliding glass door ; 370 g/m² canvas inner lining; PU waterproofness 5000mm; mildew-resistant; fire retardant.

Ground Lining 480 g/m² beige PVC.

Poles 6063-T6 aluminum alloy, 80mm x 100mm, 1.2mm thickness, wood pattern.

Connector: 70mm x 1.5mm black Q235B steel (2.75in. x 0.059in.).

Netting 40gsm white.

Rope 6mm nylon ropes.

Stakes 5mm steel.



Rugged



Durable



Safe



Engineered

LUNA
GLAMPING

www.lunaglamping.com 10