

Imagine your dream space.
What does it look and feel like?
Our accessories empower you
to convert nature's perfect
structure into an office purpose-
built for your work-from-home
life or a glamping tent where
you can't wait to spend your
weekends.

Stargazer Add-Ons

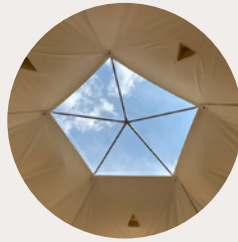
Make your Stargazer your own with custom add-ons



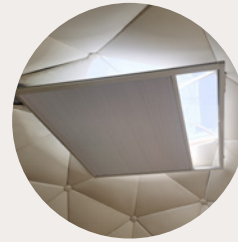
TWO-LAYER INSULATION



SOLAR FAN



ROOFTOP SKYLIGHT



SKYLIGHT MOTORIZED
BLIND



CURTAINS



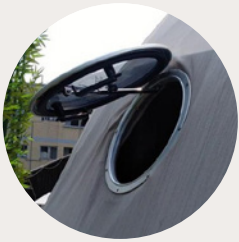
KEYLESS ENTRY (FOB)



STOVE JACK



CIRCLE PVC WINDOW



CIRCLE GLASS WINDOW



TRIANGLE ROLL-UP
MESHWINDOW



GLASS DOOR



ENGINEERING

Stargazer Add-Ons



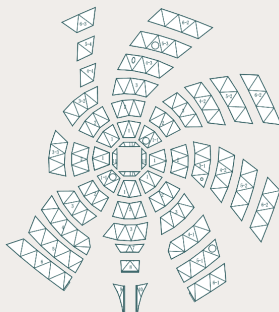
Two-Layer Insulation

Achieve a clean, finished look that helps save money on your heating.

This two-layer insulation combines an air barrier and cotton-based canvas to increase your energy efficiency and help you warm your space on cold spring nights and cool autumn mornings. Combine our two-layer insulation with a source of heat to turn your dome into a cozy space made for year-round stargazing.

Additional Specifications: Additional Specifications: Sections can be replaced when damaged or stained. The insulation is an 18mm thick thinsulate that is water and mildew proof as well as fire retardant. The interior of the dome is covered by a thick canvas available in white, khaki or grey, with custom colours available upon request.

SAMPLE DIAGRAM
Insulation panels



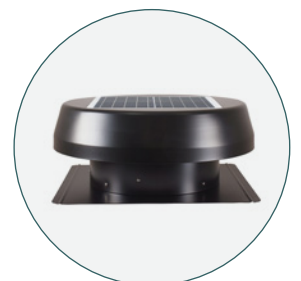
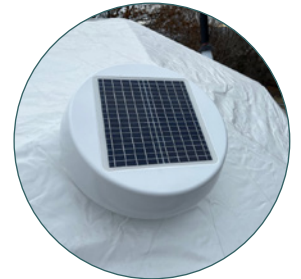
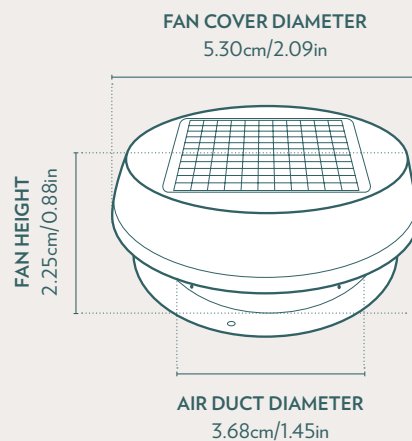


Solar Fans

The sun is blazing and the mercury rising, but it's cool inside your geodesic dome. How? Easy: through a solar-powered fan.

Powered by an 18W polycrystalline solar panel, the stylish fan with three 14" aluminum axial flow blades and galvanized steel enclosure keeps the air circulating on even the hottest summer days and removes moisture. Plus, there's a plugin included for days when the sun just won't shine.

Additional Specifications: 18V brushless DC motor, 17W 18V Polycrystalline solar panel. Available in Black or White.

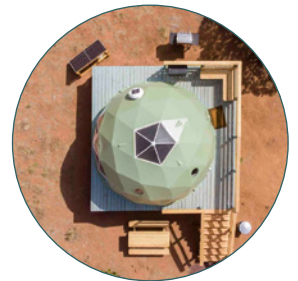




Rooftop Skylight

Stare into the stars in comfort.

Open the centre of the dome to the night with a custom-built skylight that lets natural light pour into your dome and makes staying up late to watch the stars a breeze. When paired with a motorized blind, our PVC skylight is the perfect addition to your new Stargazer.





Skylight Motorized Blind

Skylights are great until the sun comes up and cancels your plans for late morning rest and relaxation.

Shield yourself from the morning sun with a motorized blind for your skylight. And, with a handy remote and wired setup, you won't even need to get out of bed.

Comes with a remote control, wires into 110V power, comes with our three color options or custom color if requested. Hangs from the bars of the dome by four wires, one in each corner for easy leveling.





Curtains

Pull back the curtains and let in the light or shut out the first light so you can sleep in on Sunday mornings with curtains custom-built for your new geodesic dome.

This curtain kit is easy to install and includes the curtain rod and hangers. With curtains that cover the full height and width of the clear PVC window, you can choose when you want to see and be seen.

Additional Specifications: Black out curtains also help with insulation. These curtains feature a curtain track that attaches to the dome frame. The curtain is available in white, khaki or grey, with custom colours available upon request.





Keyless Entry (FOB)

Leave the keys on the nightstand and your worries at the door so you can spend a carefree afternoon paddling on the water or hiking through the forest.

With a punch code and fob access, keyless entry gives you and your guests easy and secure access to your new Stargazer.

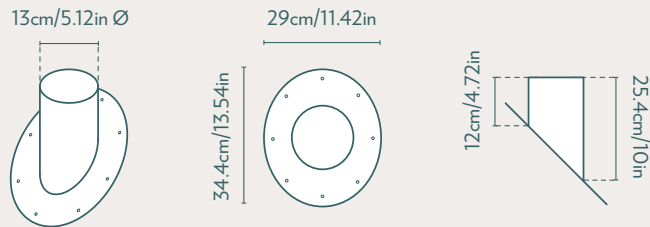


Add-ons: Stove Jack

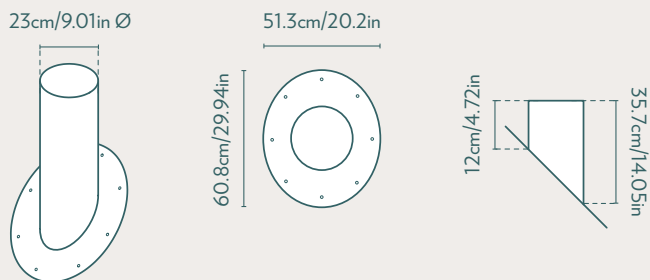
Stove Jack

Do you dream of a pellet stove in the dining room or curling up on the sofa with a good book and the crackle of a wood stove?

Our stove jack puts the decision in your hands. Just bring your own stove and choose a location within your dome. The insulation and PVC cover will be prepared to ensure a proper fit. 5" and a 9" stove jack available. Custom sizes available upon request.



9" STOVE JACK DIMENSIONS





Circle PVC Window (Non-Operable)

Nothing says comfort and tranquillity like natural light. Allow even more light to shine through your dome with a circle PVC window.

As a static window that cannot be opened, the circle PVC window is often located higher in the dome to welcome light into your living space.





Circle Glass Window (Operable)

Unlock your window and welcome the great outdoors inside with 400mm circle glass windows.

Held open by a ram, this window features a turn latch and is placed at a height where it can be easily used, often in row two between four and five feet from the ground.





Triangle Roll-up Mesh Window

Breathe fresh air into your space with a roll-up triangle mesh window that perfectly fits into the piping of the dome.

Featuring a removable screen, these windows are primarily used for ventilation and can be placed anywhere in rows one and two.





Glass Door

Let nature guide you from the entrance to the panoramic bay window while you keep your Stargazer secure with a locking glass door.

Made with aluminum and tempered glass, the door is lightweight and easy to use while still providing the sense of safety and security you need, whether you're building a new office space or a year-round glamping retreat.

SINGLE DOOR FRAME

Inside 1.92m/6.3ft x 0.82m/2.69ft



DOUBLE DOOR FRAME

Inside 1.92m/6.3ft x 1.42m/4.66ft





Engineering Reports

Unlock structural engineering reports that make permits for your new dome home a breeze.

Conducted by a qualified Canadian engineering firm, your included report breaks down the wind, snow, and load ratings of your chosen geodesic dome as required by municipalities and local governments. This detailed report streamlines the permit process so you can spend less time on paperwork and more time connecting with nature in your new Stargazer.

Visit our website to download your included engineering report.

